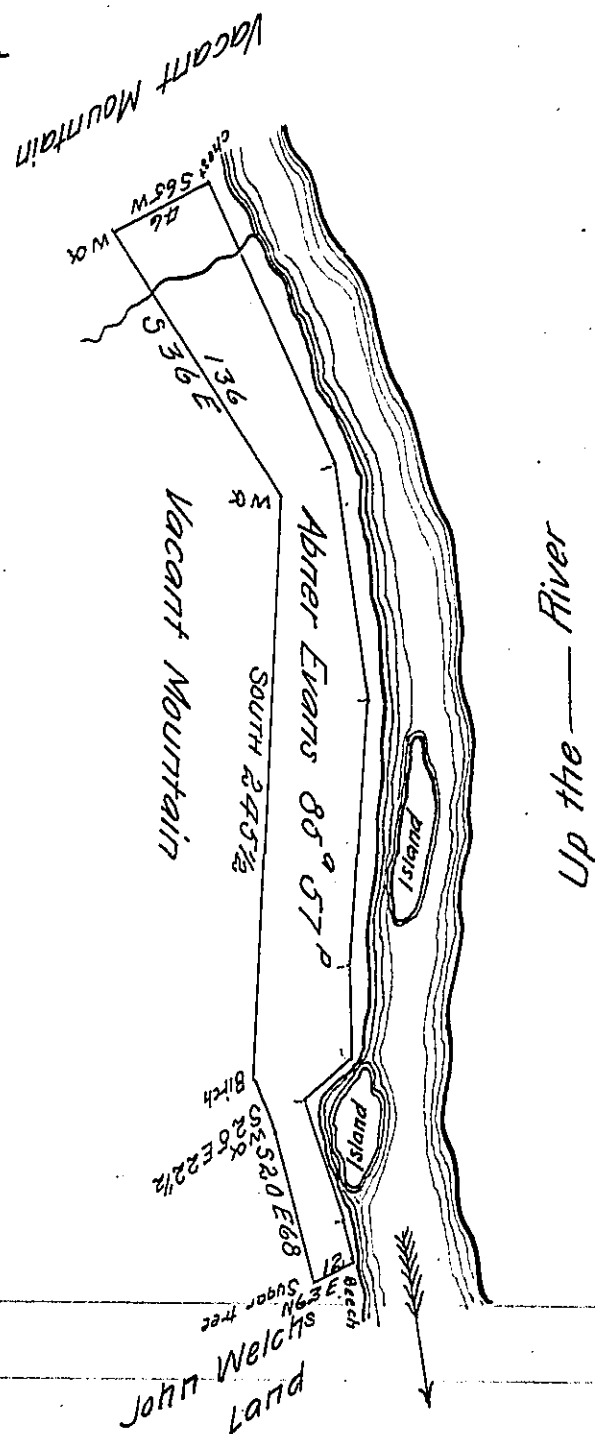


Courses and distances up the River  
Beginning at a Beech Thence

- N 17 W 16 Ps
- N 20 W 56 "
- N 45 E 24 "
- N 4 W 40 "
- N 1 E 114 "
- N 10 W 102 "
- N 17 W 18 "
- N 20 W 58 "
- N 36 W 53 to a chestnut



Survey'd the above Described tract of Land for Abner Evans  
on the 11<sup>th</sup> Day of May 1822 In pursuance of his Warrant dated the 14<sup>th</sup>  
Day of December 1792. Situate on the South west side of the West  
branch of the River Susquehanna, about ten miles of the Great Island  
(late Northumberland County) Containing eighty five acres fifty  
seven perches and allowance of Six per cent for Roads &c

(Note The above Land in Chapman Township Lycoming County)

To Saml Cochran Esq

Robert Allen D. S.

S. Genl

IN TESTIMONY that the above is a copy of the original remaining on file in  
the Department of Internal Affairs of Pennsylvania, made  
conformably to an Act of Assembly approved the 16th day of  
February, 1833, I have hereunto set my Hand and caused  
the Seal of said Department to be affixed at Harrisburg,  
this fourteenth day of October 1904

*Loose R. Brown*  
Secretary of Internal Affairs.